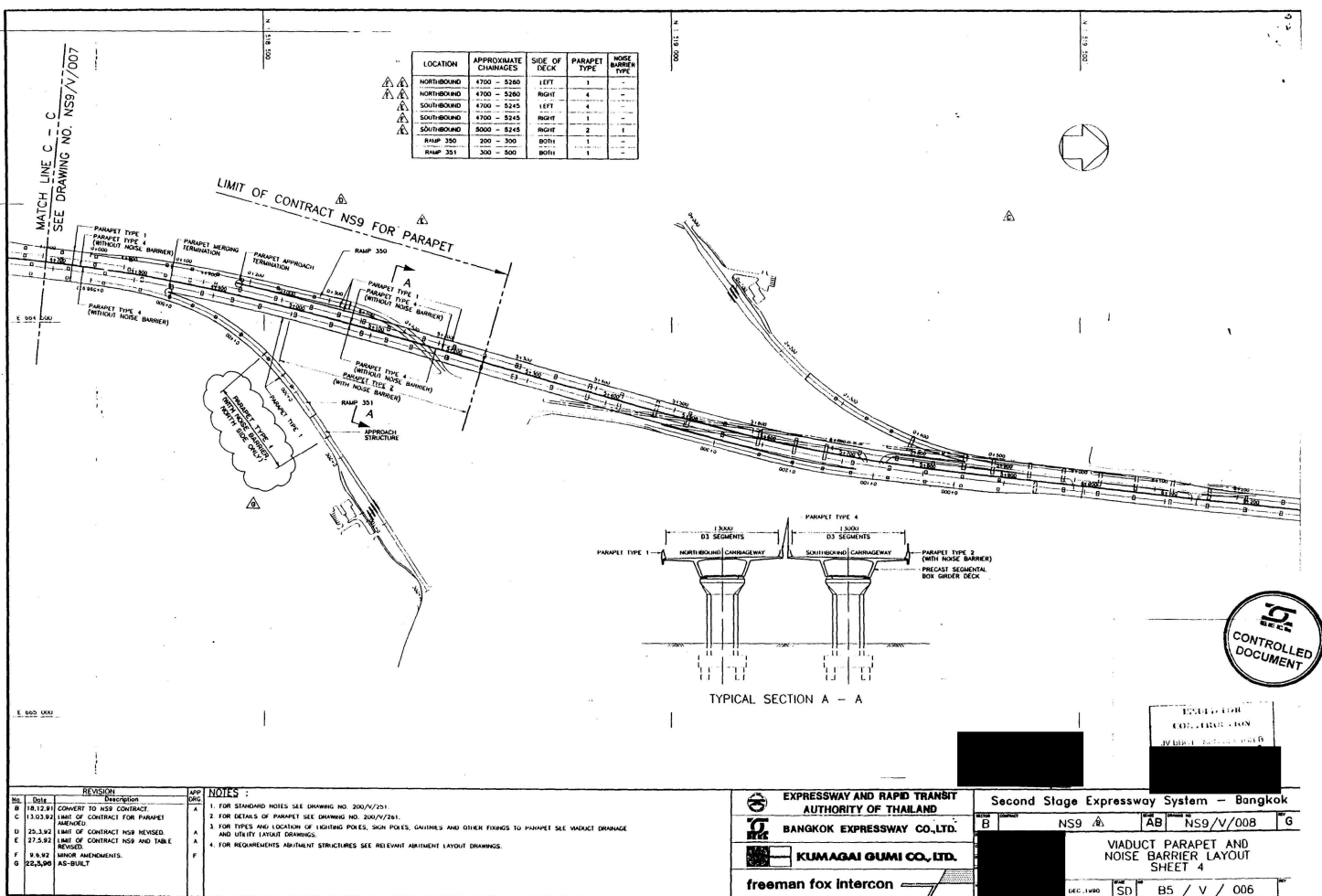
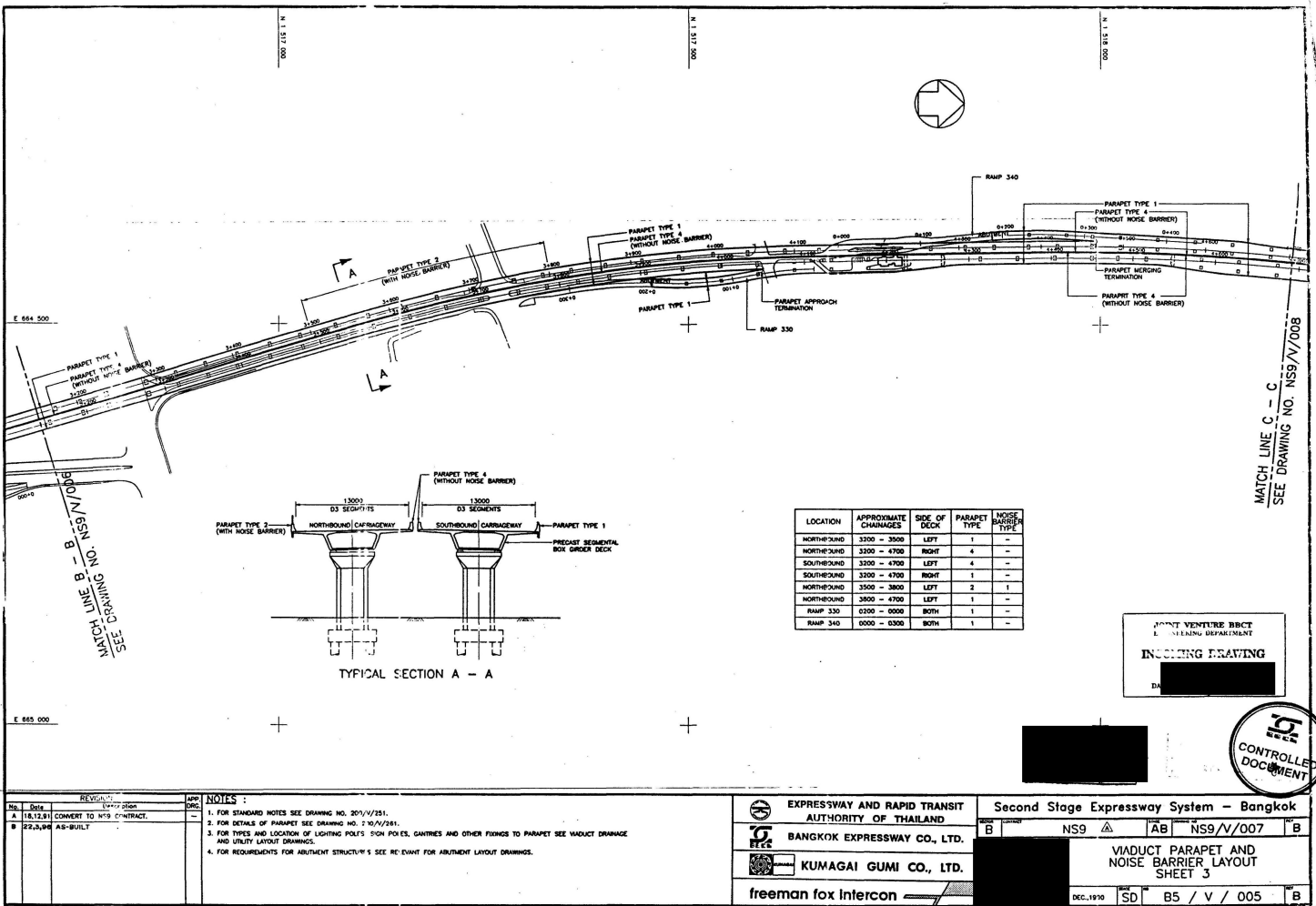
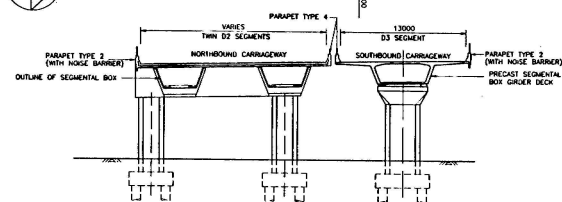


ภาคผนวก ง
เอกสารประกอบการปฏิบัติตามมาตรการ

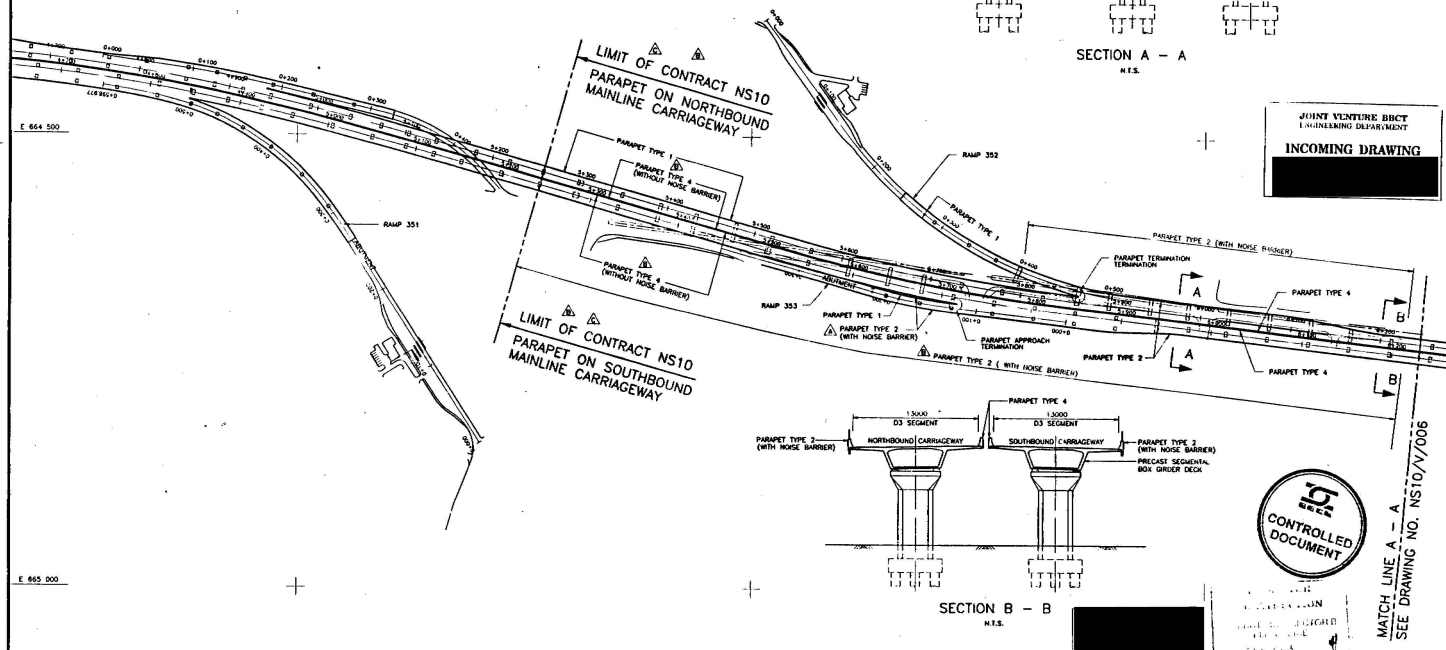
ภาคผนวก ง-1
กำแพงกันเสียงที่ติดตั้งเพิ่มเติมในระยะดำเนินการ





SECTION A - A

JOINT VENTURE BBCT
ENGINEERING DEPARTMENT
INCOMING DRAWING







SECTION B - B



MATCH LINE A - A
SEE DRAWING NO. NS10/V/006

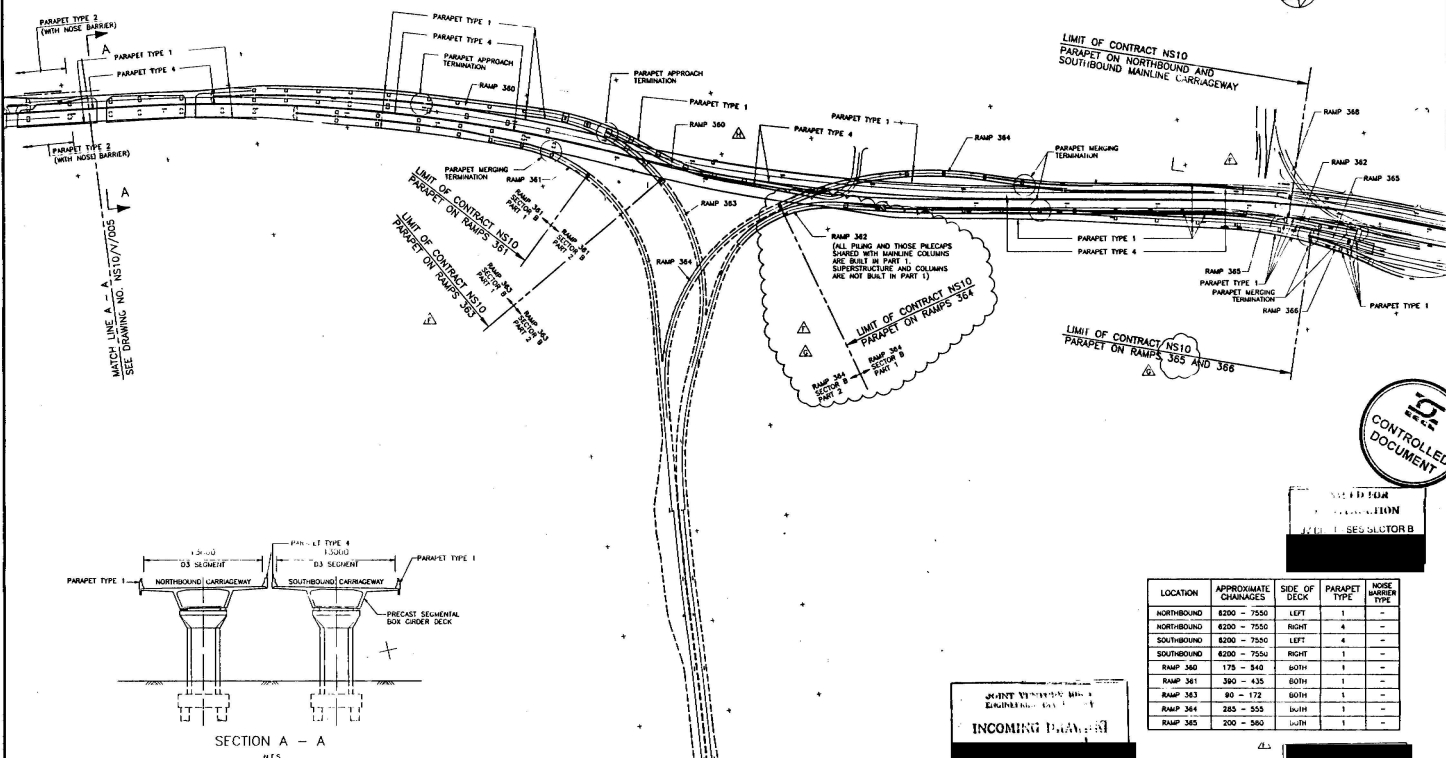
NOTES :

1. FOR STANDARD NOTES SEE DRAWING NO. 200/4/251.
2. FOR DETAILS OF PARAPET SEE DRAWING NO. 200/4/251.
3. FOR TYPES AND LOCATION OF LIGHTING POLES, SIGN POLES, GANTRIES AND OTHER FIXINGS TO PARAPET SEE CIVIL PROVISIONS FOR E & M DRAWINGS.
4. FOR REQUIREMENTS ABUTMENT STRUCTURES SEE RELEVANT ABUTMENT LAYOUT DRAWINGS.
5. THIS DRAWING IS BASED ON DRAWING NO. BS/4/204.

 EXPRESSWAY AND RAPID TRANSIT
AUTHORITY OF THAILAND
 BANGKOK EXPRESSWAY CO., LTD.
 KUMAGAI GUMI CO., LTD.
freeman fox intercon 

Second Stage Expressway System - Bangkok

B	NS10	AB	NS10/V/005	D
VIADUCT PARAPET AND NOISE BARRIER LAYOUT SHEET 1				
JUN., 1991	SD	B5 / V / 008	D	



SECTION A - A





LOCATION	APPROXIMATE CHAIRAGES	SIDE OF DECK	PARAPET TYPE	NOISE METER TYPE
NORTHBOUND	8200 ~ 7550	LEFT	1	-
NORTHBOUND	8200 ~ 7550	RIGHT	4	-
SOUTHBOUND	8200 ~ 7550	LEFT	4	-
SOUTHBOUND	8200 ~ 7550	RIGHT	1	-
RAMP 360	175 ~ 340	BOTH	1	-
RAMP 361	390 ~ 435	BOTH	1	-
RAMP 363	90 ~ 172	BOTH	1	-
RAMP 364	265 ~ 555	BOTH	1	-
RAMP 365	200 ~ 560	BOTH	1	-

INCOMING PLANNERS

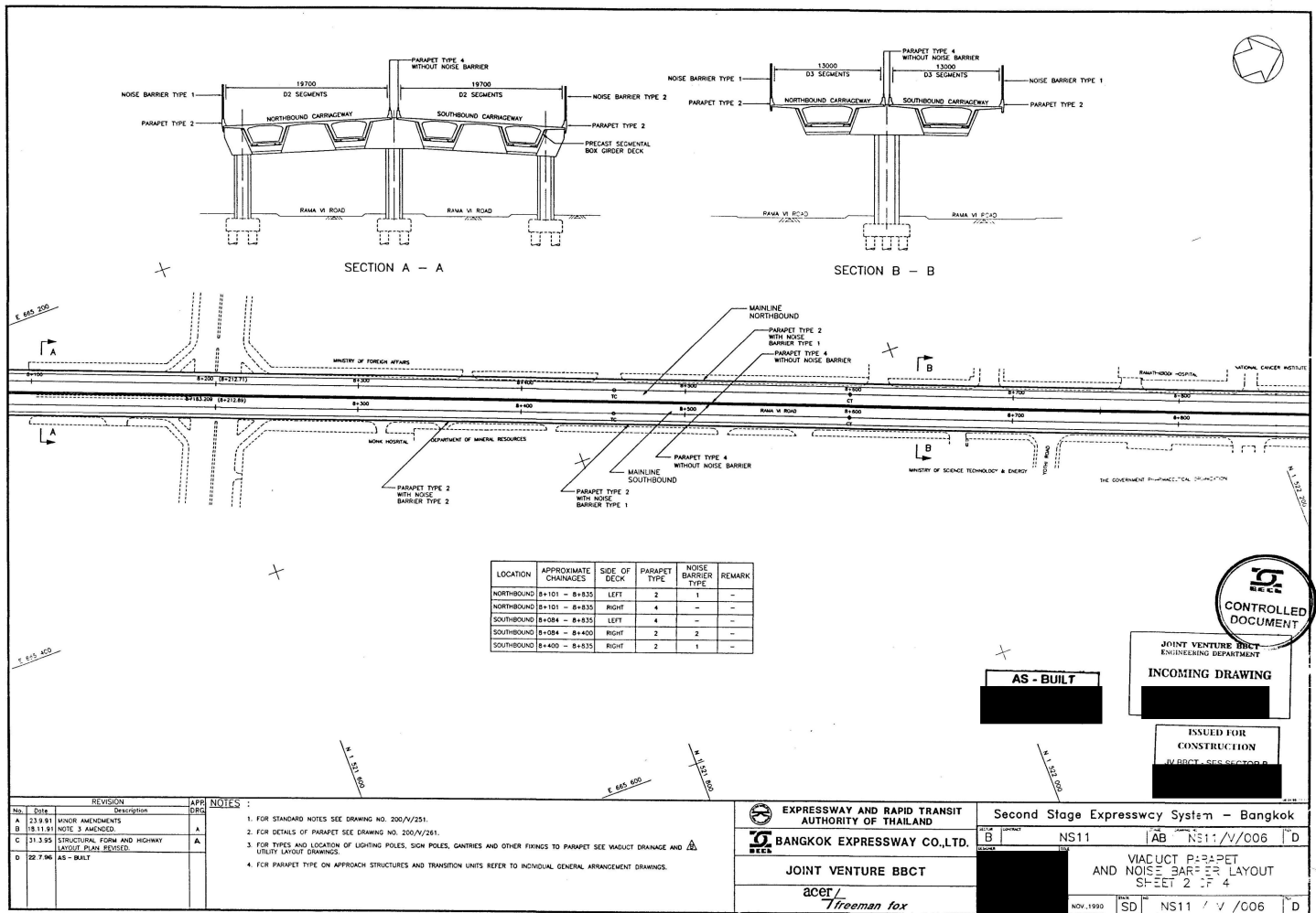
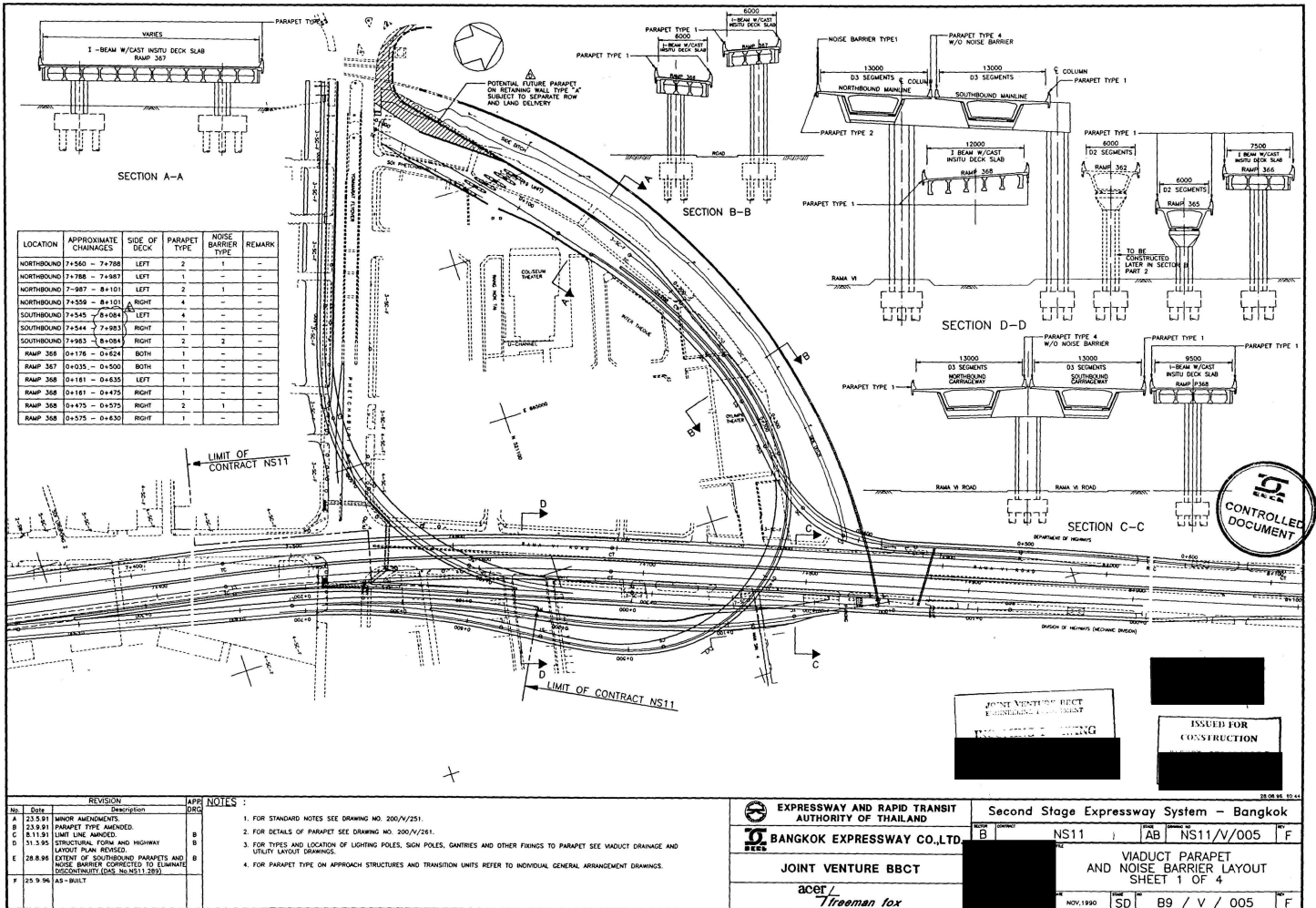
NOTES :

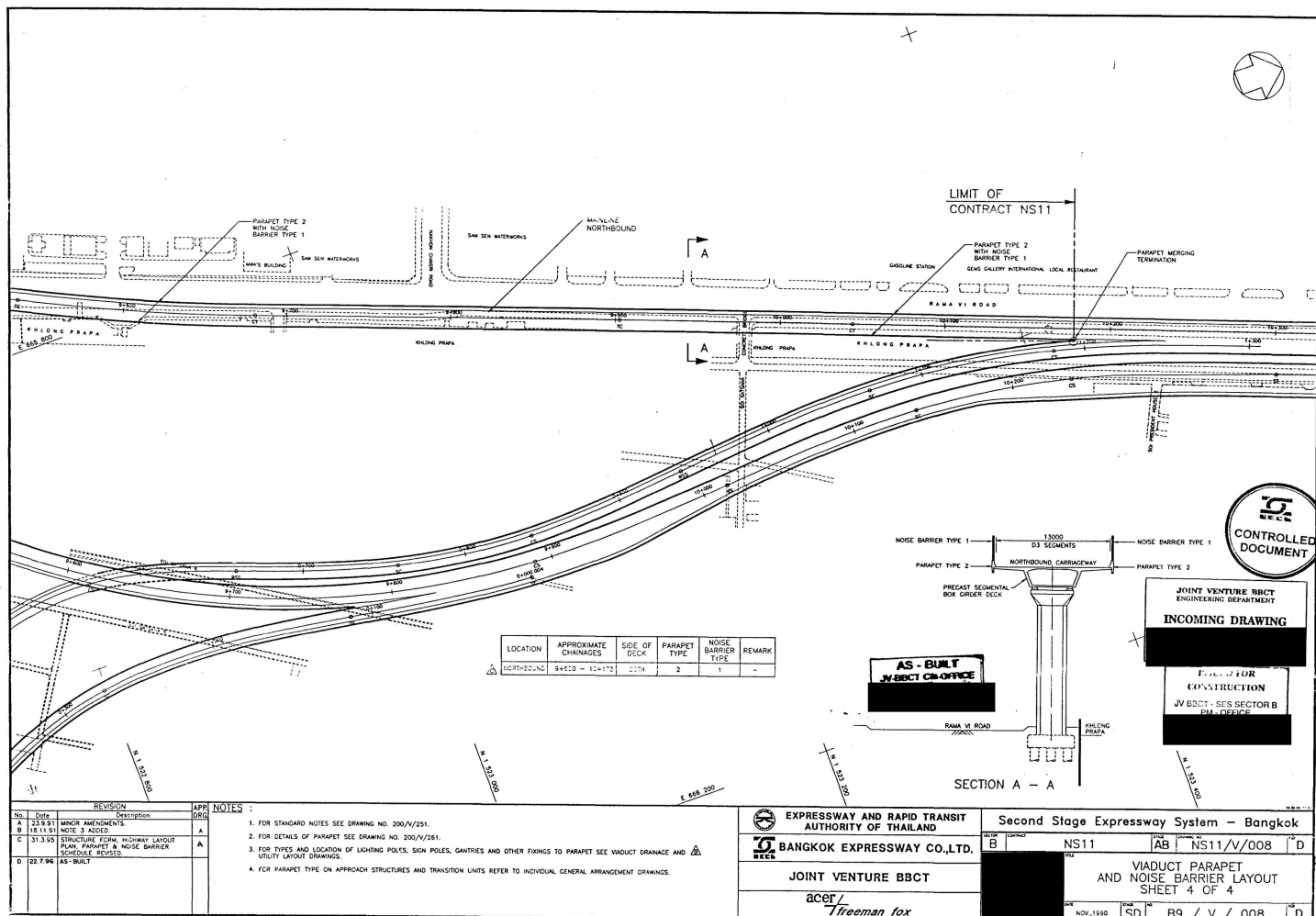
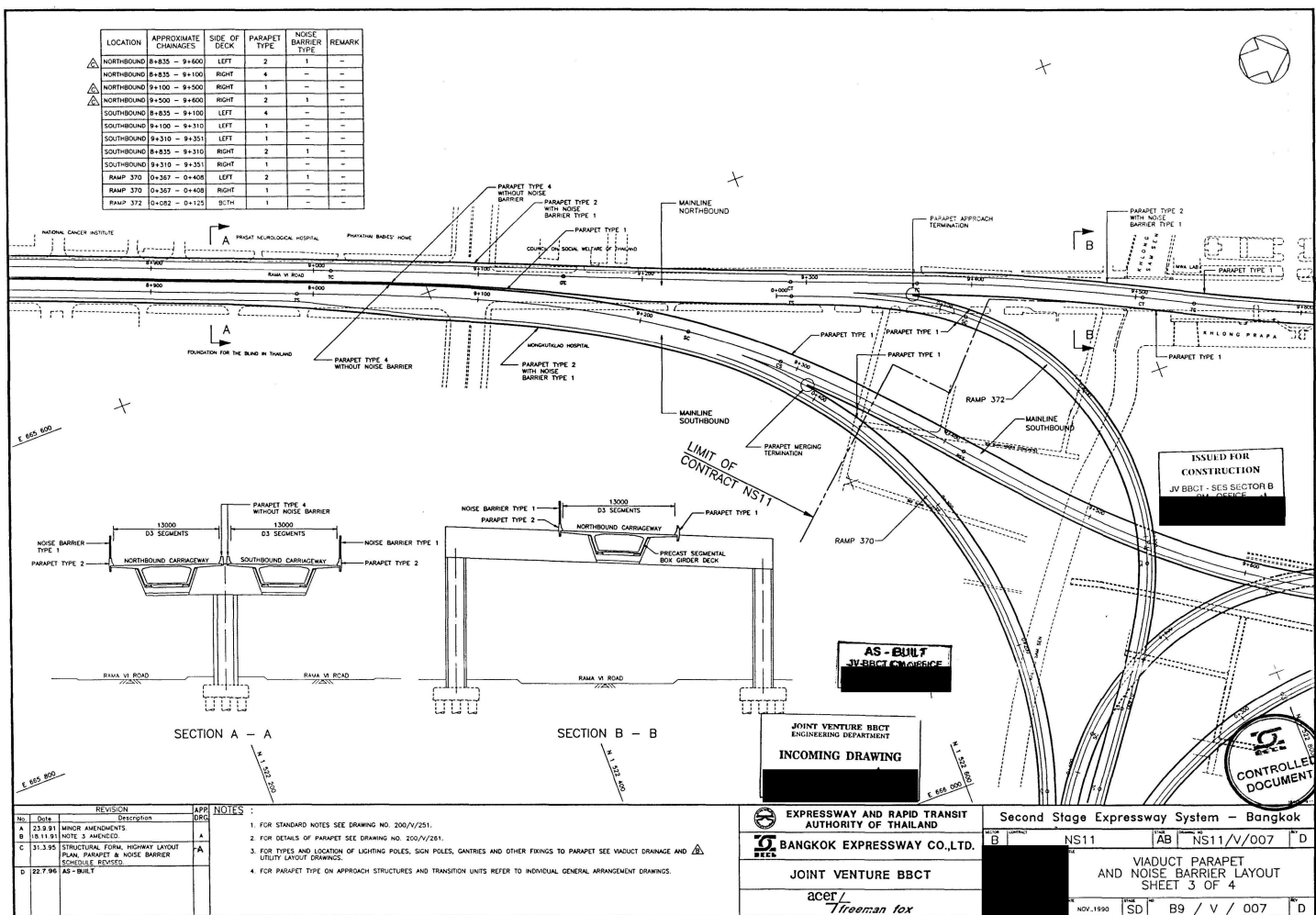
1. FOR STANDARD NOTES SEE DRAWING NO. 200/V/251.
2. FOR DETAILS OF PARAPET SEE DRAWING NO. 200/V/281.
3. FOR TYPES AND LOCATION OF LIGHTING POLES, SIGN POLES, GANTRIES AND OTHER FIXINGS TO PARAPET SEE VIADUCT DRAWING AND UTILITY LAYOUT DRAWINGS.
4. FOR REQUIREMENTS ABUTMENT STRUCTURES SEE RELEVANT ABUTMENT LAYOUT DRAWINGS.

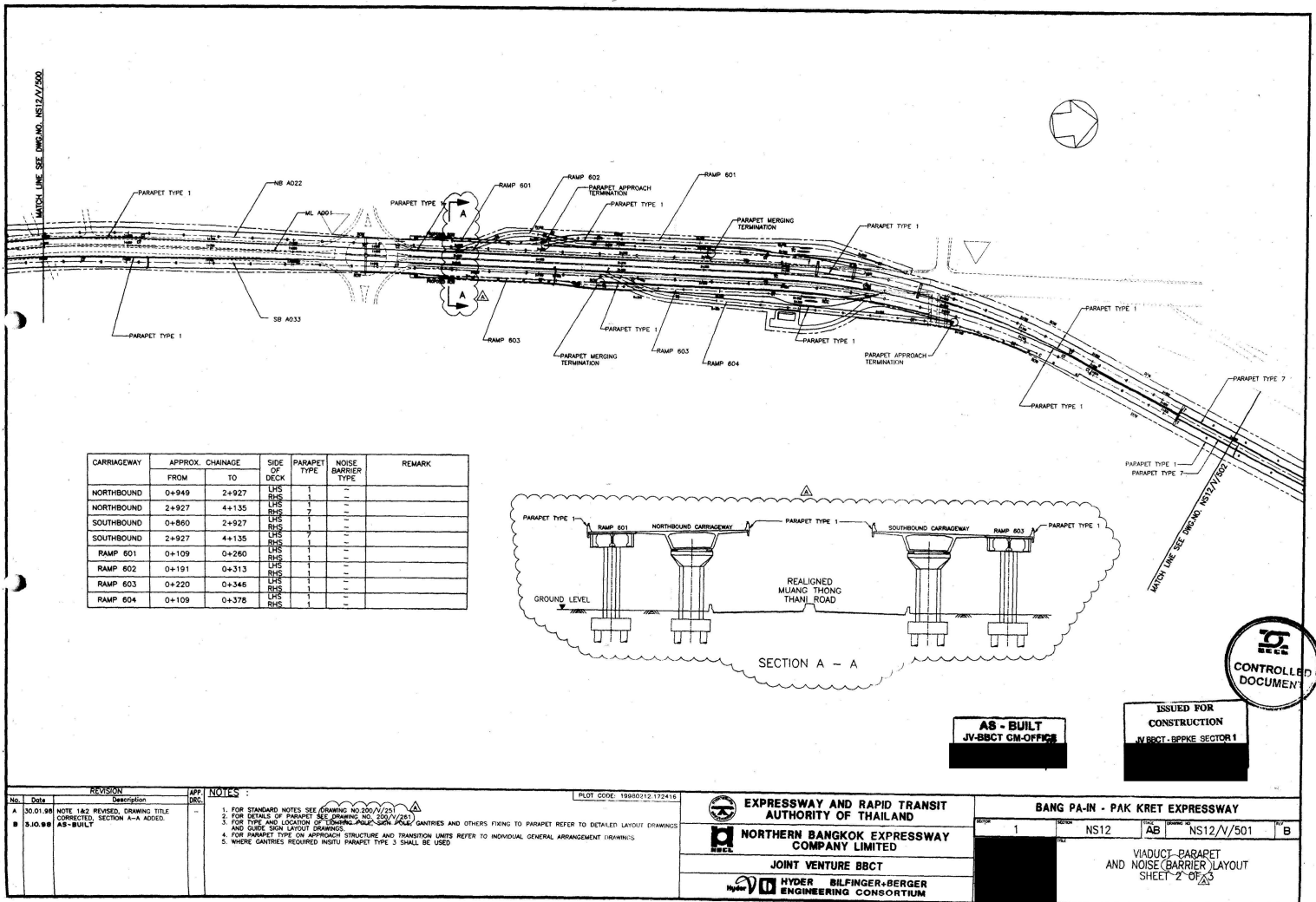
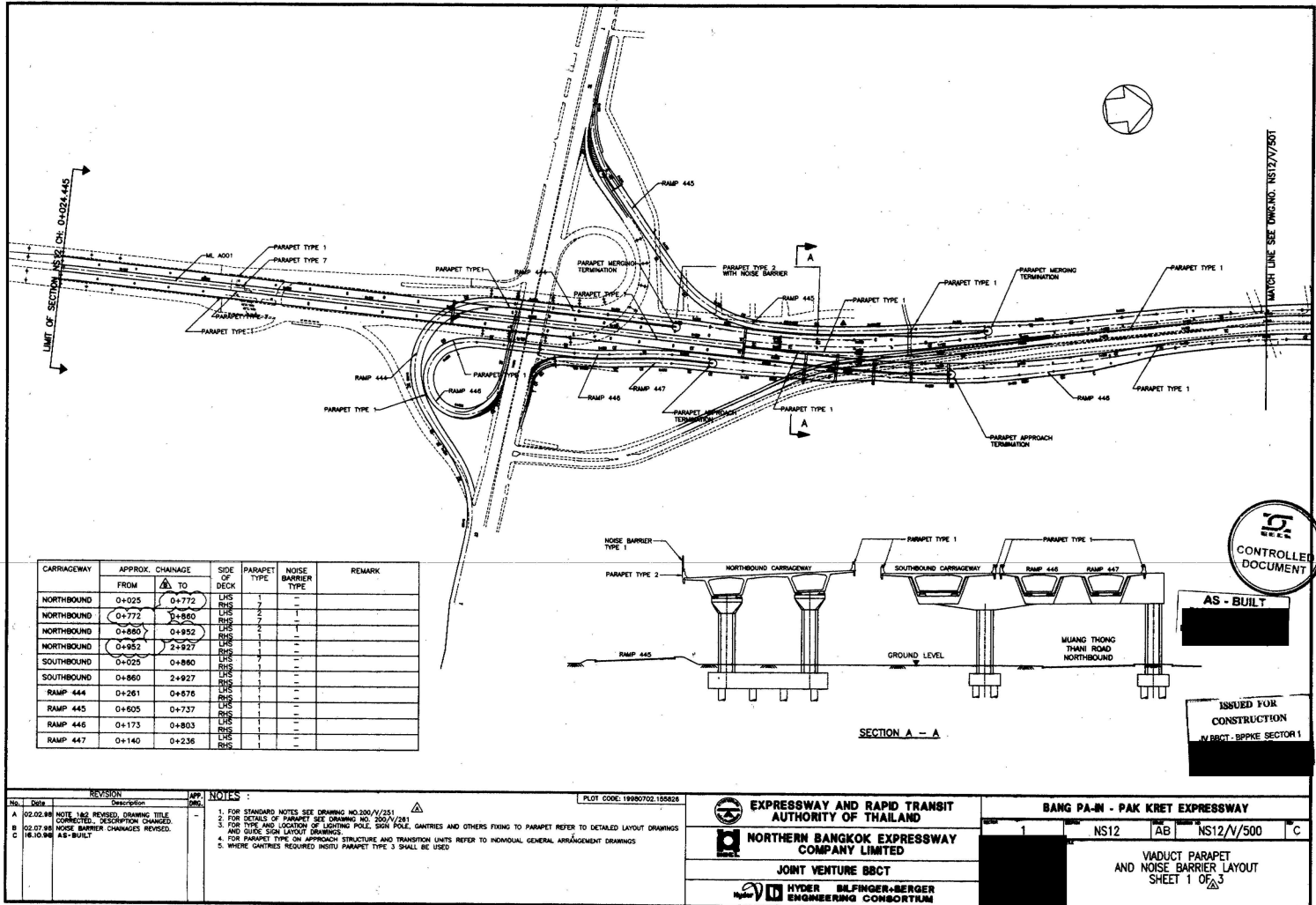
 EXPRESSWAY AND RAPID TRANSIT
AUTHORITY OF THAILAND
 BANGKOK EXPRESSWAY CO., LTD.
JOINT VENTURE BBCT
acer/
freeman for

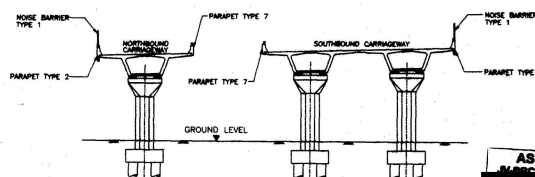
Second Stage Expressway System - Bangkok

NS10	AB	NS10/V/006
VIADUCT PARAPET AND NOISE BARRIER LAYOUT SHEET 2		
SD	R5/V/007	










SECTION A - A

CONTROLL
DOCUMENT

ISSUED FOR
CONSTRUCTION

JV BBCT - BPPKE SECTOR 1

REVISION		APP. DATE	NOTES	PLOT CODE	BANG PA-IN - PAK KRET EXPRESSWAY	
No.	Date	Description				
A	02.02.84	NOTE 1&2 REVISED. DRAWING TITLE CORRECTED. MATCH LINE ADDED.	1. FOR STANDARD NOTES SEE DRAWING NO.300/V/251		1	NS12
B	02.07.88	NOISE BARRIER CHANGES REVISED. A-B=SHULT	2. FOR DETAILS OF PARAPET TYPE SEE NO.300/V/251			AB
C	16.08.88		3. FOR DETAILS OF APPROACH STRUCTURES AND TRANSITION LINES REFER TO DETAILED LAYOUT DRAWINGS AND GUIDE SIGN LAYOUT DRAWINGS			NS12/V/502
			4. FOR PARAPET TYPE ON APPROACH STRUCTURE AND TRANSITION LINES REFER TO INDIVIDUAL GENERAL ARRANGEMENT DRAWINGS			C
			5. WHERE GANTRIES REQUIRED INSITU PARAPET TYPE 3 SHALL BE USED			



**EXPRESSWAY AND RAPID TRANSIT
AUTHORITY OF THAILAND**

**NORTHERN BANGKOK EXPRESSWAY
COMPANY LIMITED**

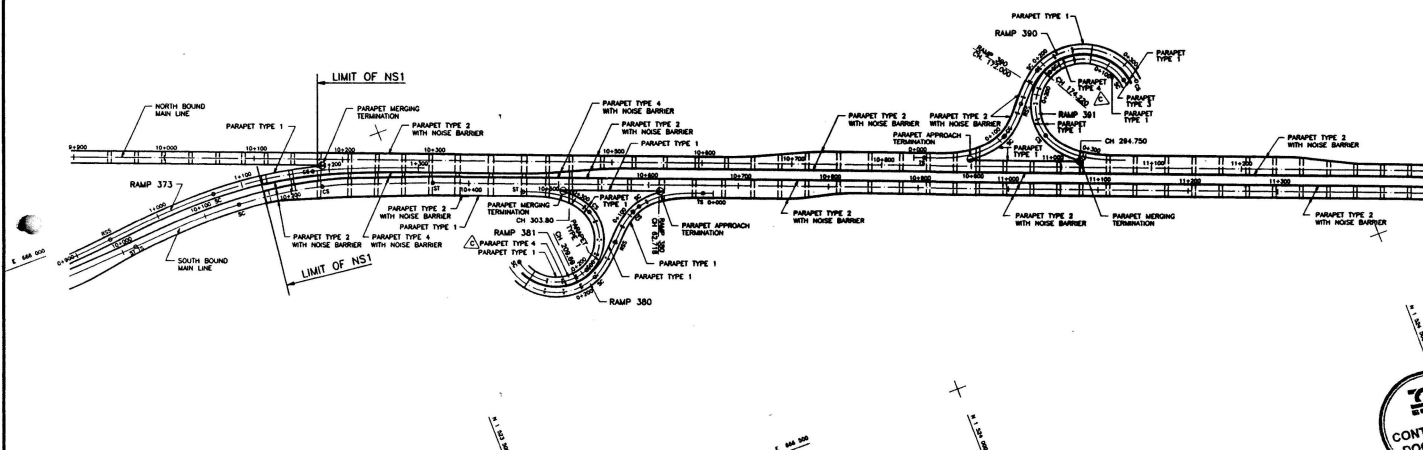
JOINT VENTURE MBCT

**HYDER BULFINGER-BERGER
ENGINEERING CONSULTANTS**

**VIADUCT PARAPET
AND NOISE BARRIER LAYOUT
SHEET 3 OF 3**

LOCATION	APPROXIMATE CHANGES	SIZE OF PECK	PARAPET TYPE	NOISE BARRIER TYPE	COMMENT
NORTHBURNE	10+173.319 10+173.319	BOTH	2	1	—
NORTHBURNE	10+236.376 10+236.376	LEFT	2	1	—
NORTHBURNE	10+236.376 10+236.376	RIGHT	4	1	—
NORTHBURNE	10+454.378 10+454.378	BOTH	2	1	—
NORTHBURNE	10+507.094 11+022.094	LEFT	1	—	—
NORTHBURNE	10+507.094 11+022.094	RIGHT	2	1	—
NORTHBURNE	11+257.054 11+257.054	BOTH	2	1	—
SOUTHBURNE	10+129.750 10+129.750	BOTH	2	1	—
SOUTHBURNE	10+151.400 10+151.400	LEFT	4	1	—
SOUTHBURNE	10+285.850 10+285.850	RIGHT	2	1	—
SOUTHBURNE	10+313.400 10+313.400	RIGHT	1	—	—
SOUTHBURNE	10+450.100 10+450.100	LEFT	2	—	—
SOUTHBURNE	10+581.140 10+581.140	RIGHT	1	—	—
SOUTHBURNE	10+614.653 10+614.653	RIGHT	1	—	—
SOUTHBURNE	10+850.000 10+850.000	BOTH	2	1	—

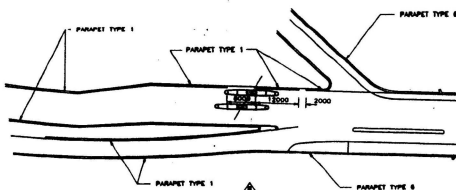
LOCATION	APPROXIMATE CHANGES	SIZE OF DECK	PARAMET TYPE	NOISE BARRIER TYPE	COMMENT
RAMP 373	1+123.560 1+123.560	LEFT	1	—	—
RAMP 373	1+123.560 1+123.560	RIGHT	2	—	—
RAMP 380	1+167.004 1+167.004	LEFT	2	1	CHARGE TRANSFER FROM TRUCKS TO RAMP
RAMP 380	1+167.004 1+167.004	RIGHT	1	—	—
RAMP 380	END OF TRANSITION APPROACH TO TRANSITION	RIGHT	1	—	—
RAMP 381	END OF TRANSITION APPROACH TO TRANSITION	LEFT	1	—	RAMP CHANGE
RAMP 381	END OF TRANSITION APPROACH TO TRANSITION	RIGHT	4	—	—
RAMP 381	END OF TRANSITION APPROACH TO TRANSITION	LEFT	1	—	—
RAMP 381	END OF TRANSITION APPROACH TO TRANSITION	RIGHT	4	—	—
RAMP 381	END OF TRANSITION APPROACH TO TRANSITION	LEFT	1	—	—
RAMP 381	END OF TRANSITION APPROACH TO TRANSITION	RIGHT	4	—	—
RAMP 381	END OF TRANSITION APPROACH TO TRANSITION	LEFT	1	—	—
RAMP 381	END OF TRANSITION APPROACH TO TRANSITION	RIGHT	4	—	—
RAMP 381	END OF TRANSITION APPROACH TO TRANSITION	LEFT	1	—	—
RAMP 381	END OF TRANSITION APPROACH TO TRANSITION	RIGHT	4	—	—



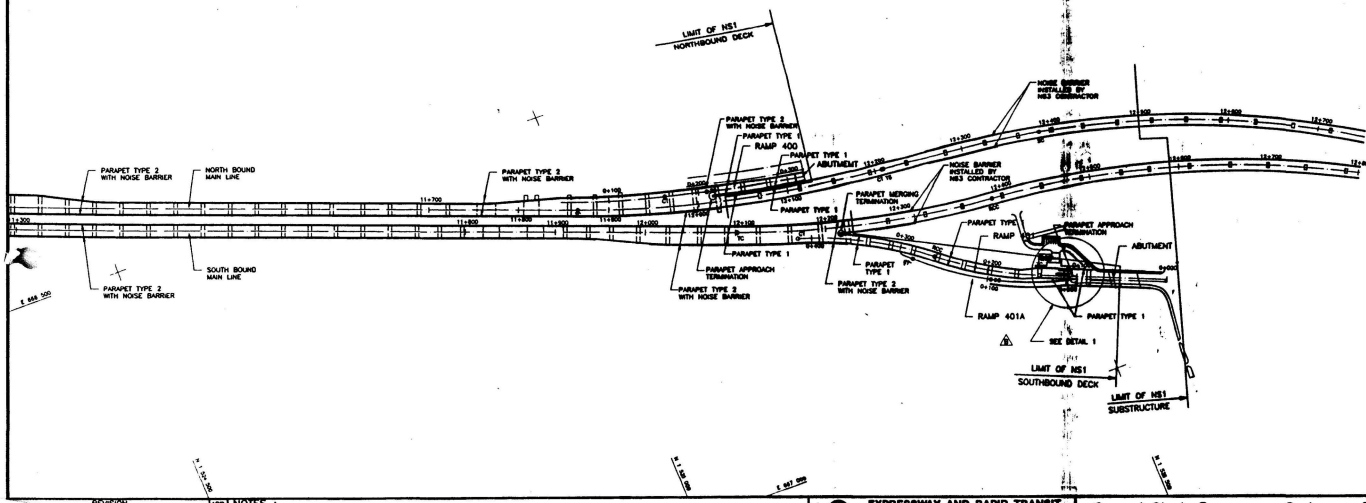
2
BECA
CONTROLLED
DOCUMENT

REVISION		APP	NOTES
No.	Date	Disc	Description
A	18.11.90		1. FOR STANDARD NOTES SEE DRAWING NO. 200/V/351.
B	03.12.92		2. FOR DETAILS OF PARAPET SEE DRAWING NO. 200/V/351.
C	03.12.92		3. FOR TYPES AND LOCATION OF LIGHTING POLES, SIGN POLES, GANTRIES AND OTHER FIXINGS TO PARAPET SEE VAULT DRAINAGE AND UTILITY LAYOUT DRAWINGS.
D	20.02.92		4. FOR PARAPET TYPE ON APPROACH STRUCTURES AND TRANSITION UNITS REFER TO INDIVIDUAL GENERAL ARRANGEMENT DRAWINGS.

LOCATION	APPROXIMATE CHANGES	SIDE OF DECK	PARAPET TYPE	NOISE BARRIER TYPE	COMMENT
NORTHBOUND	112387-112400	BOTH	2	1	-
SOUTHBOUND	112387-112400	BOTH	2	1	-
RAMP 400	112387-112400	BOTH	1	-	-
RAMP 401	112387-112400	BOTH	1	-	-




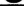


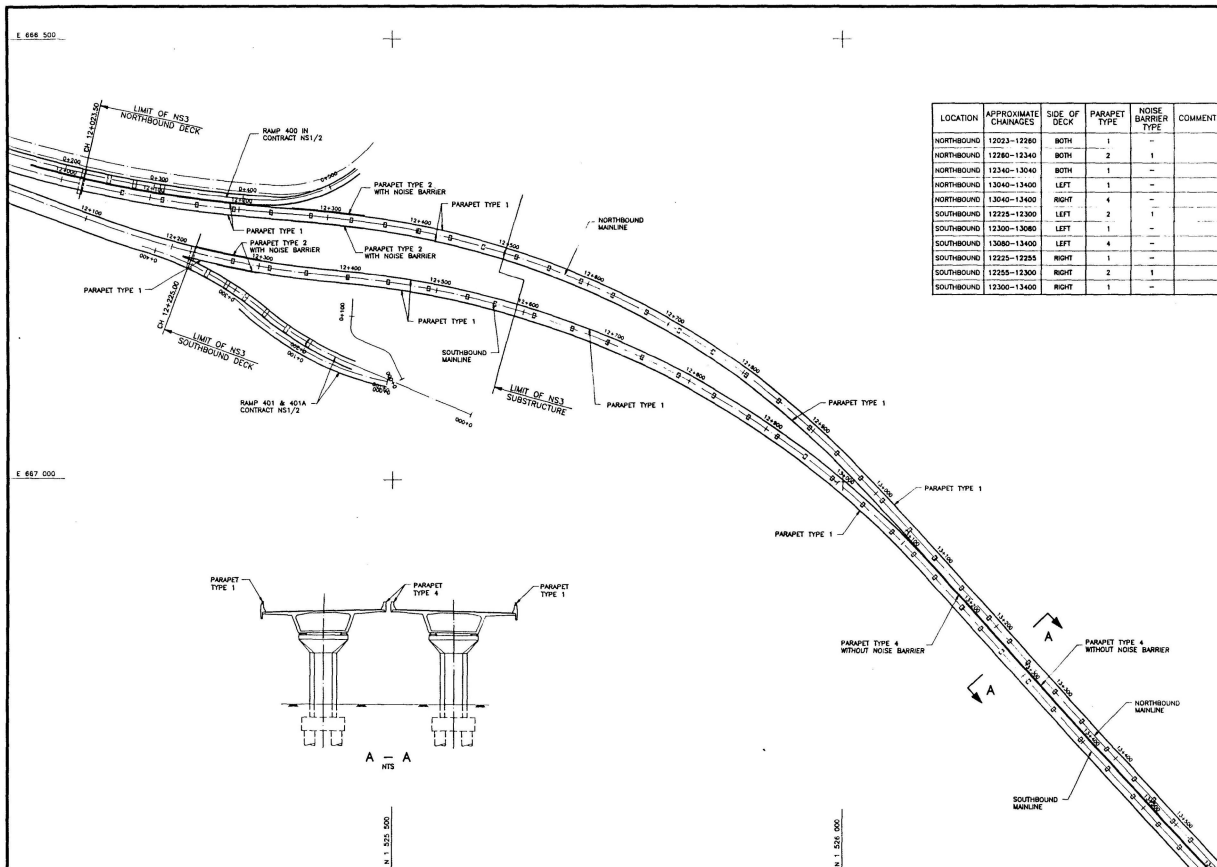
DETAIL 1
1:800



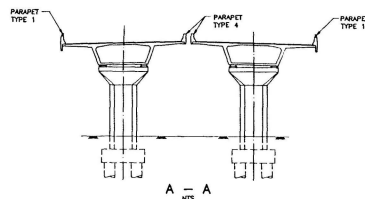
NOTES :

1. FOR STANDARD NOTES SEE DRAWING NO. 200/V/251.
2. FOR DETAILS OF PARAPET SEE DRAWING NO. 200/V/281.
3. FOR TYPES AND LOCATION OF LIGHTING POLES, SIGN POLES, GANTRIES AND OTHER FIXINGS TO PARAPET SEE VIADUCT DRAINAGE AND UTILITY LAYOUT DRAWINGS.
4. FOR PARAPET TYPE ON APPROACH STRUCTURES AND TRANSITION UNITS REFER TO INDIVIDUAL GENERAL ARRANGEMENT DRAWINGS.

	EXPRESSWAY AND RAPID TRANSIT AUTHORITY OF THAILAND	Second Stage Expressway System - Bangkok				
	BANGKOK EXPRESSWAY CO., LTD.	A	NS2	AB	NS2/V/013	C
	KUMAGAI GUMI CO., LTD.	VIADUCT PARAPET AND NOISE BARRIER LAYOUT SHEET 2				
	freeman fox intercon	SD	206	/	V / 013	C



LOCATION	APPROXIMATE CHANGES	SIDE OF DECK	PARAPET TYPE	NOISE BARRIER TYPE	COMMENT
NORTHBOUND	12023-12280	BOTH	1	-	-
NORTHBOUND	12280-12340	BOTH	2	1	-
NORTHBOUND	12340-13040	BOTH	1	-	-
NORTHBOUND	13040-13400	LEFT	1	-	-
NORTHBOUND	13400-13400	RIGHT	4	-	-
SOUTHBOUND	12225-12300	LEFT	2	1	-
SOUTHBOUND	12300-13080	LEFT	1	-	-
SOUTHBOUND	13080-13400	LEFT	4	-	-
SOUTHBOUND	12225-12255	RIGHT	1	-	-
SOUTHBOUND	12255-12300	RIGHT	2	1	-
SOUTHBOUND	12300-13400	RIGHT	1	-	-

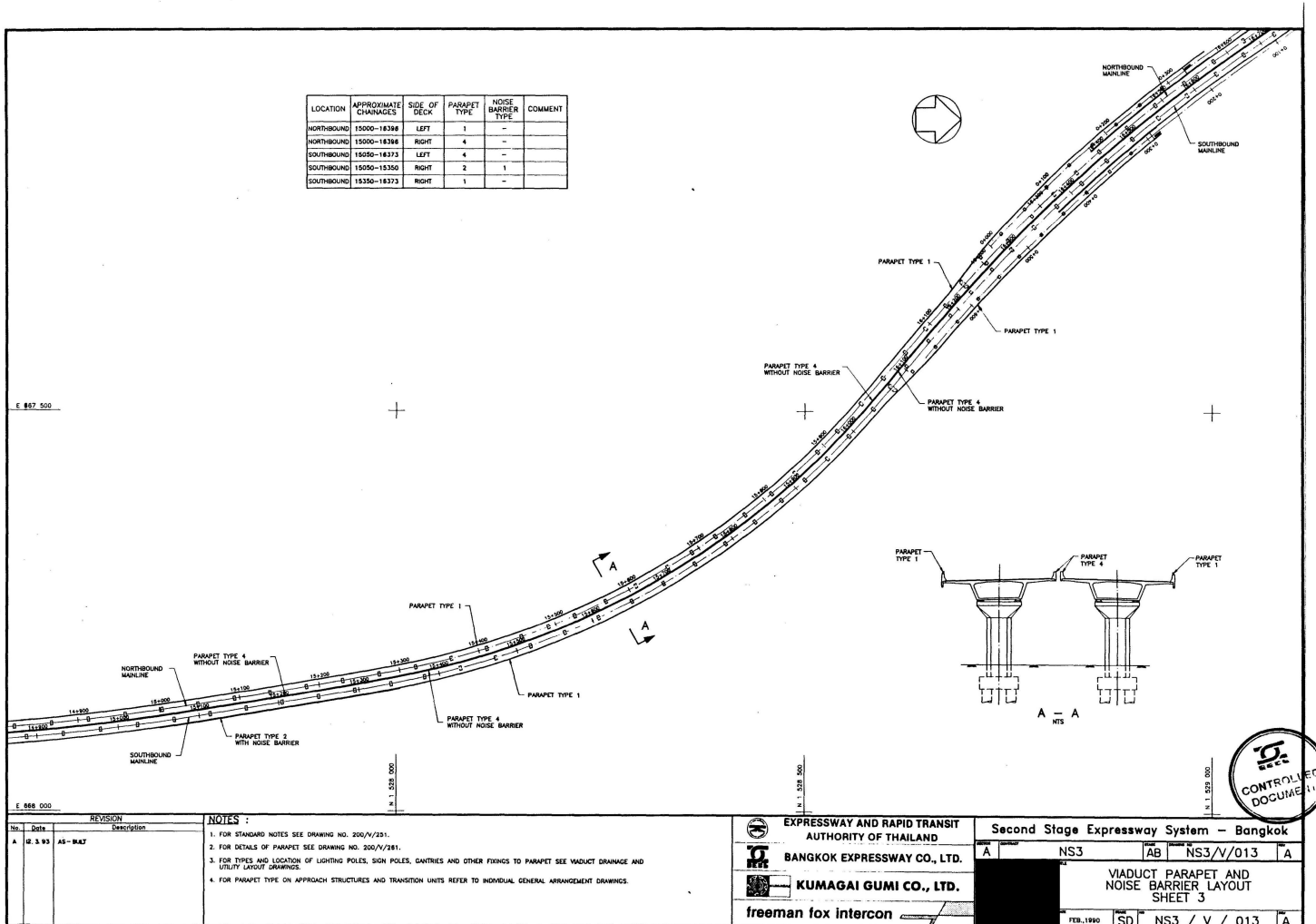
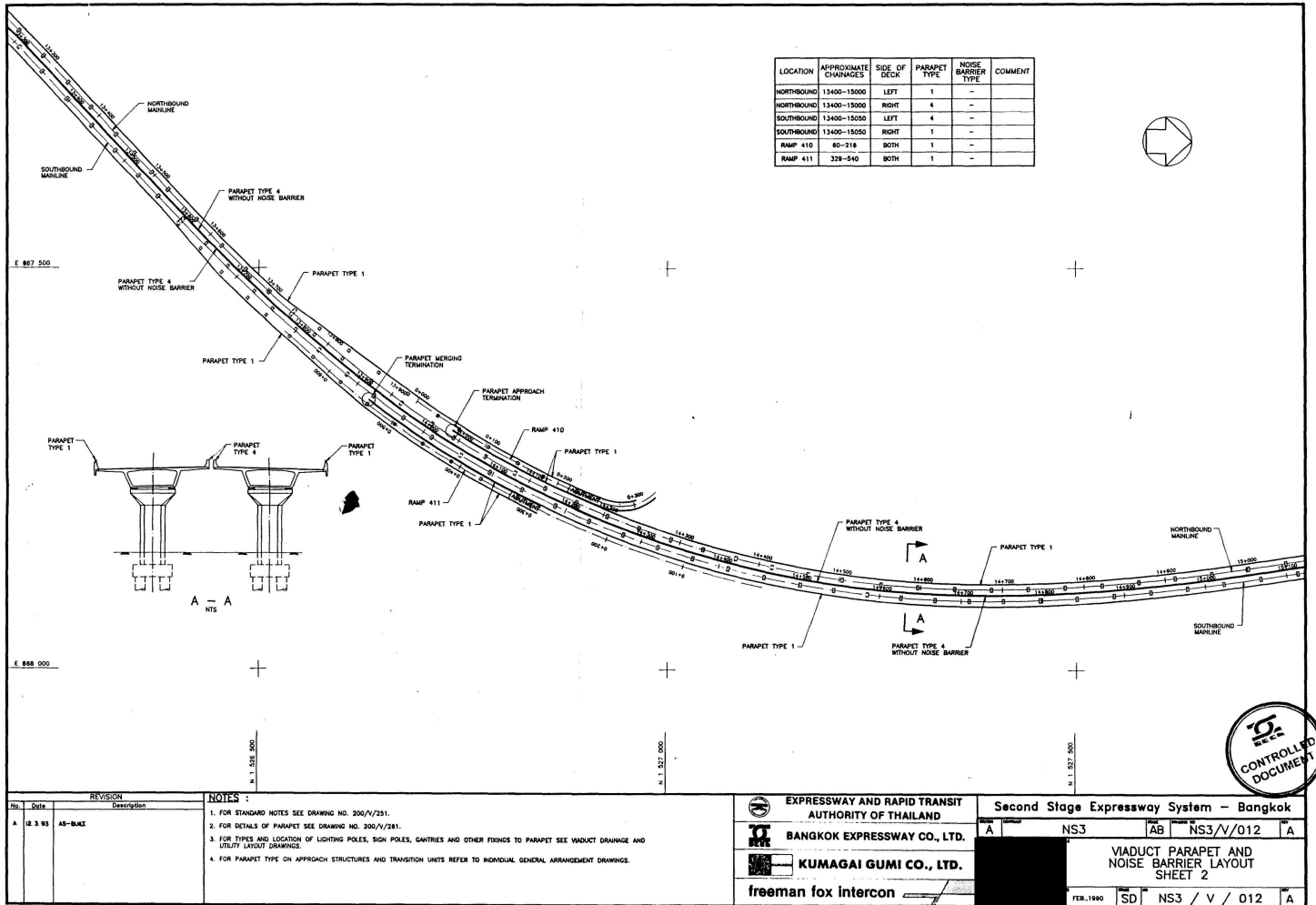


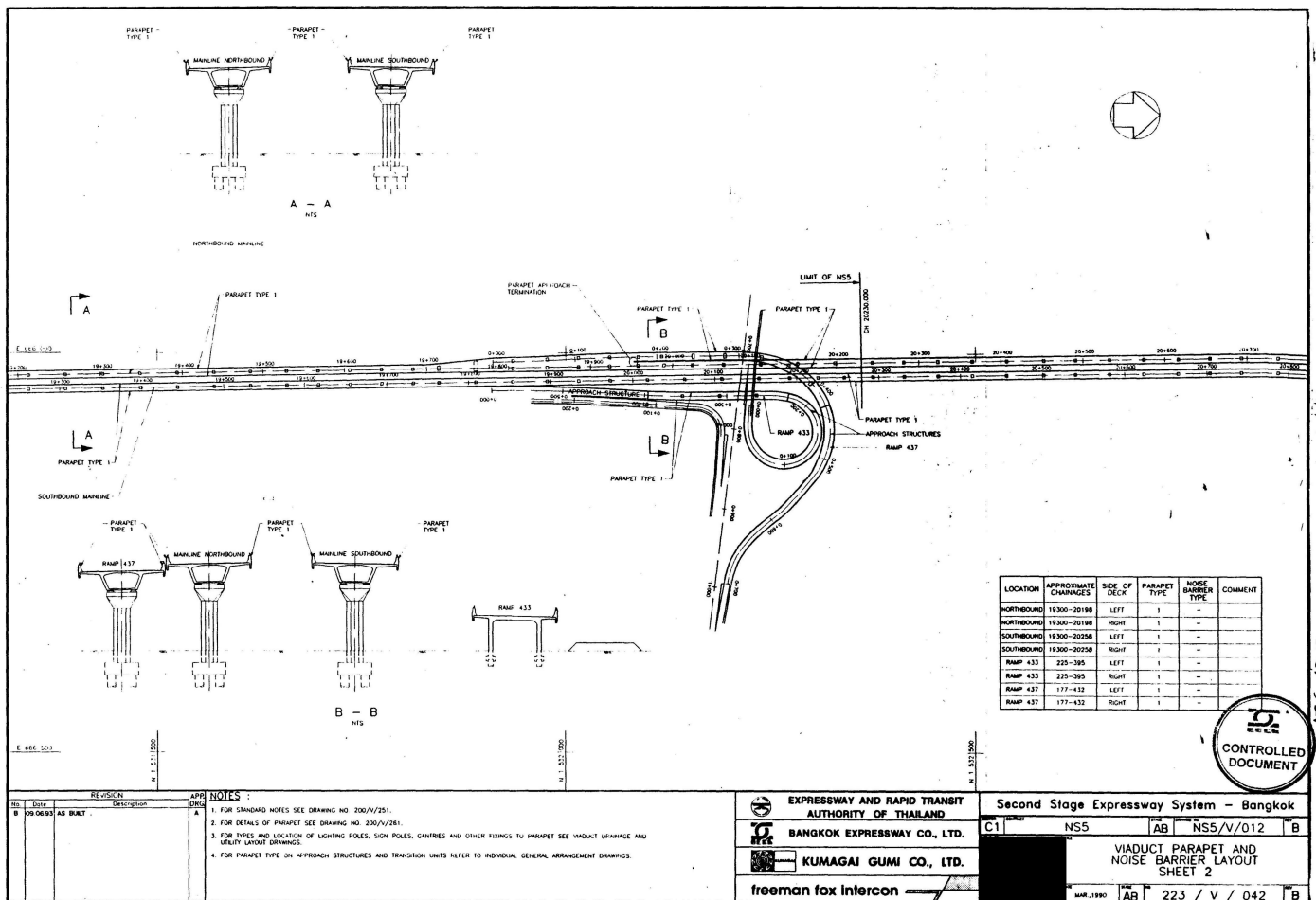
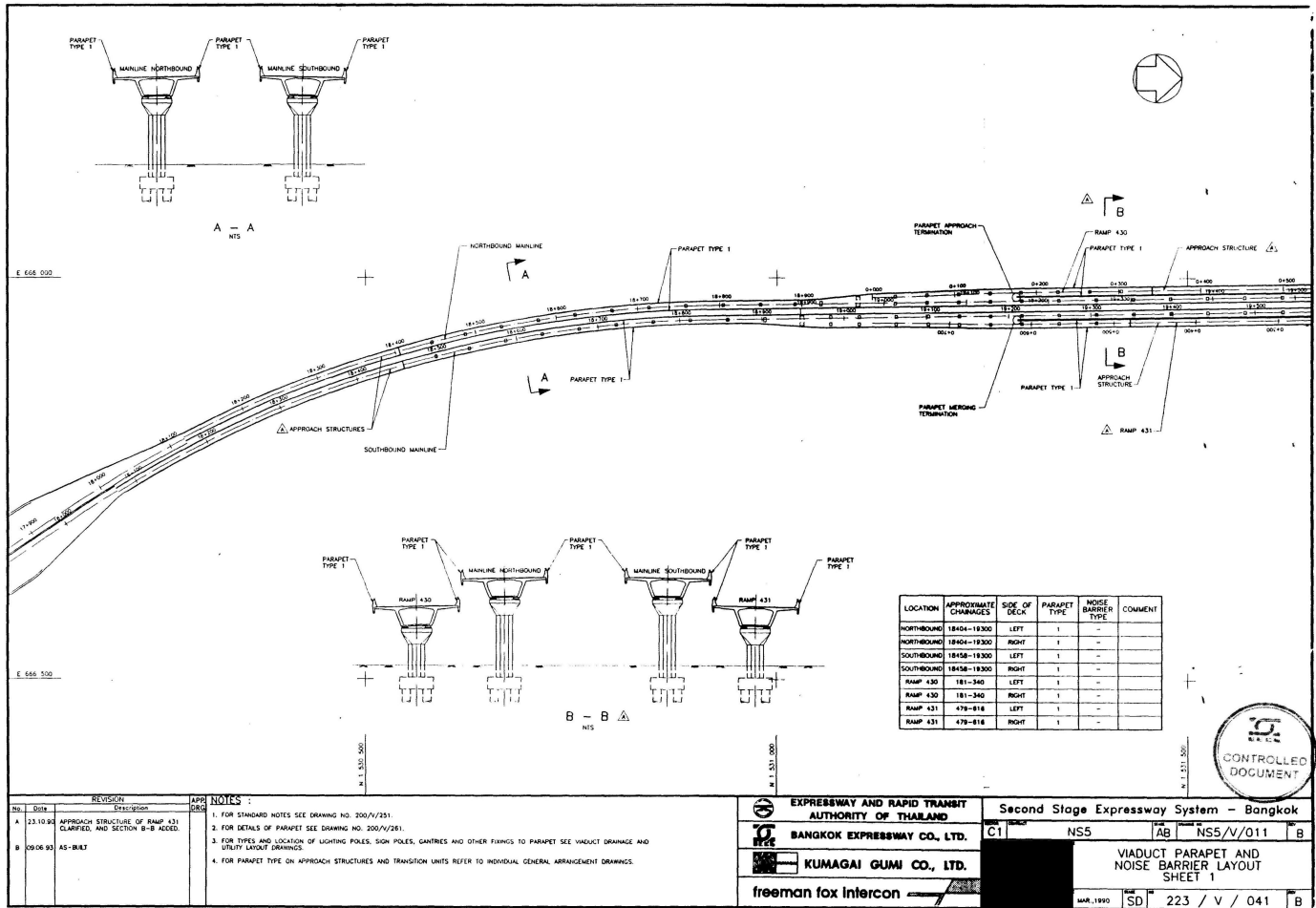
A - A
1:800

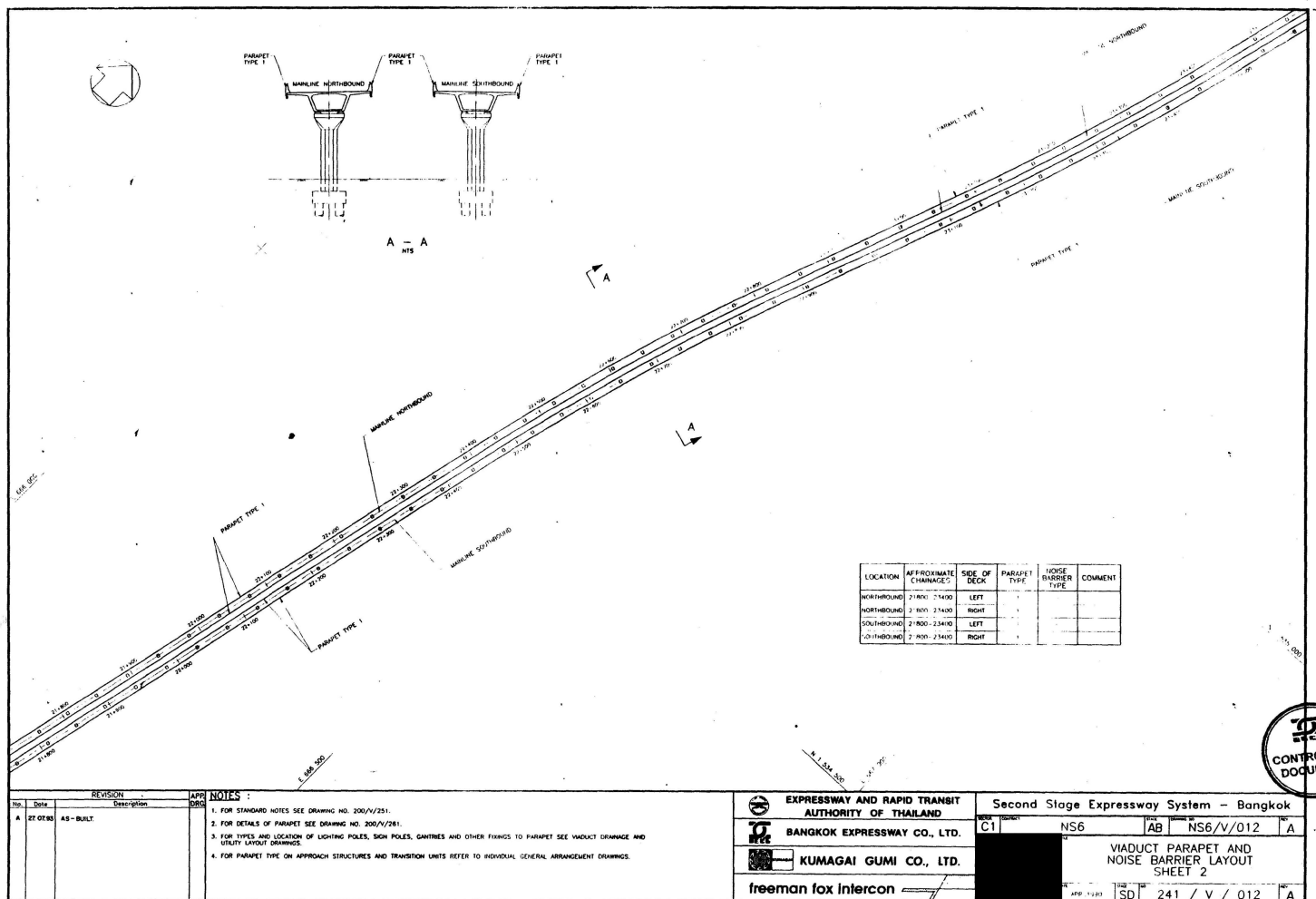
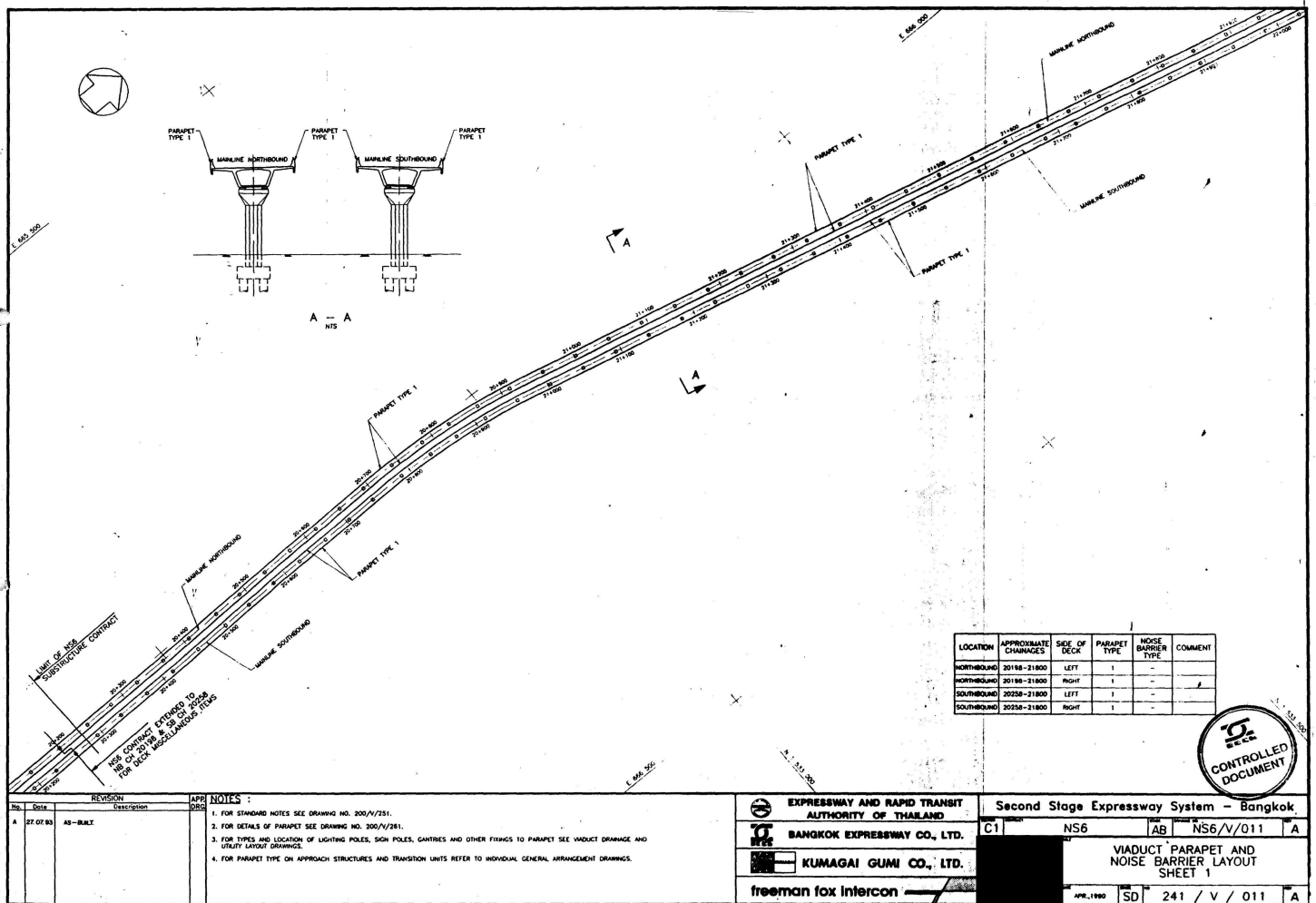
NOTES :

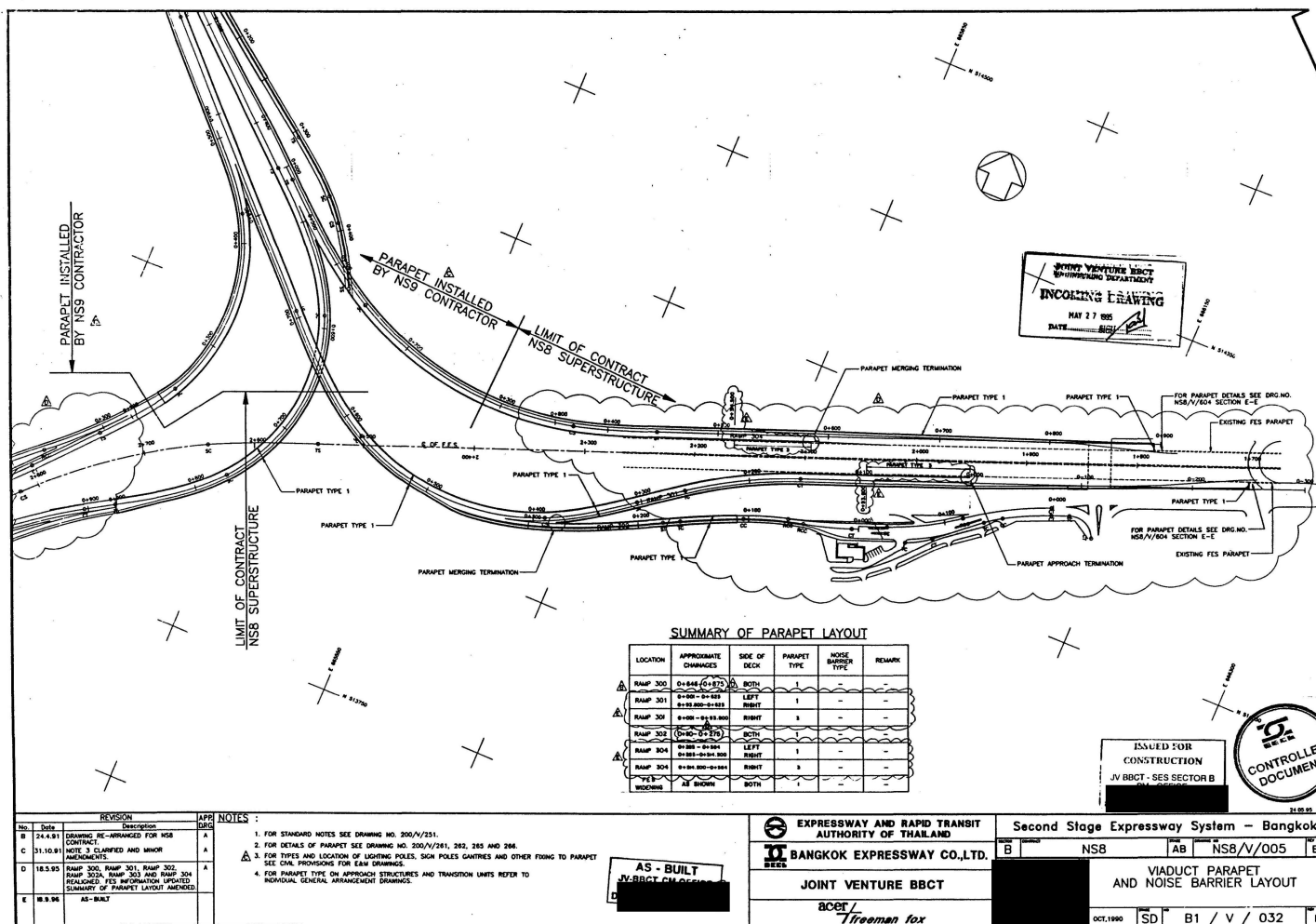
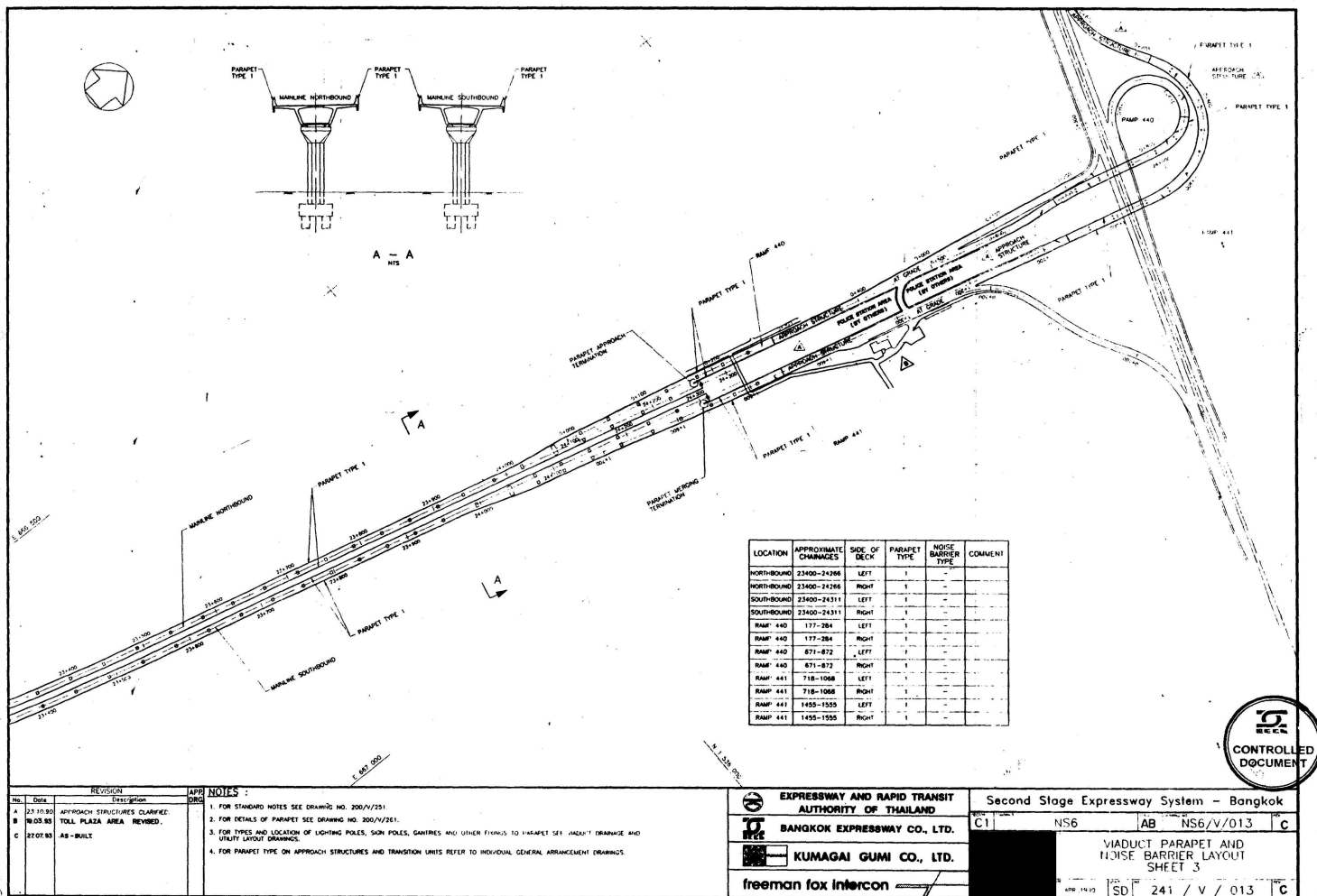
1. FOR STANDARD NOTES SEE DRAWING NO. 200/V/251.
2. FOR DETAILS OF PARAPET SEE DRAWING NO. 200/V/281.
3. FOR TYPES AND LOCATION OF LIGHTING POLES, SIGN POLES, GANTRIES AND OTHER FIXINGS TO PARAPET SEE VIADUCT DRAINAGE AND UTILITY LAYOUT DRAWINGS.
4. FOR PARAPET TYPE ON APPROACH STRUCTURES AND TRANSITION UNITS REFER TO INDIVIDUAL GENERAL ARRANGEMENT DRAWINGS.

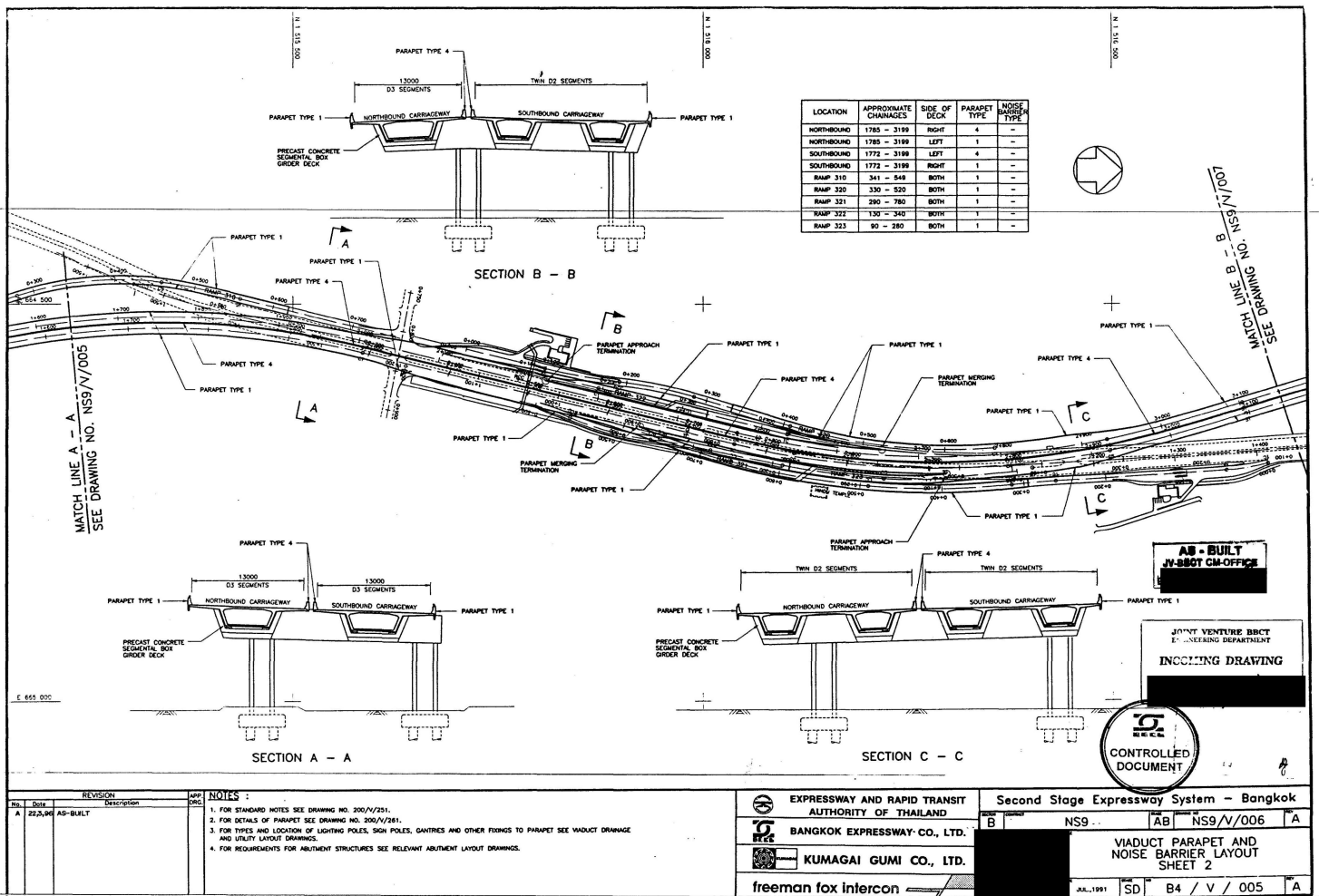
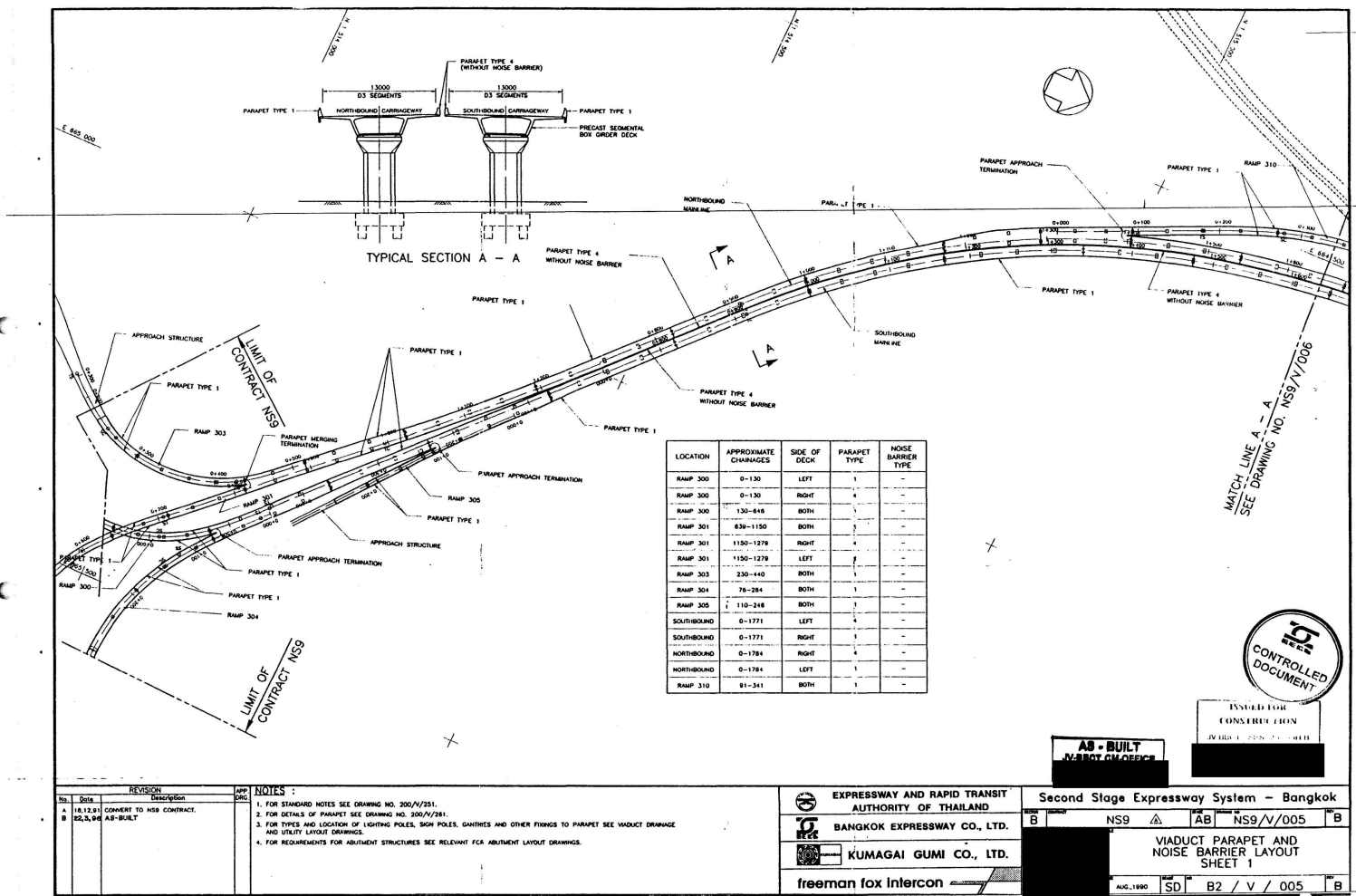
EXPRESSWAY AND RAPID TRANSIT AUTHORITY OF THAILAND		Second Stage Expressway System - Bangkok	
BANGKOK EXPRESSWAY CO., LTD.		A NS3	AB NS3/V/011 A
KUMAGAI GUMI CO., LTD.		VIADUCT PARAPET AND NOISE BARRIER LAYOUT SHEET 1	
freeman fox intercon		SD NS3 / V / 011 A	











ภาคผนวก ง-2

แผนงานบำรุงรักษาสภาพถนนทางพิเศษ ประจำปี พ.ศ. 2567

แผนการตรวจสอบและซ่อมบำรุงสะพานและทางยกระดับบนทางด่วนชั้นที่ 2 ประจำปี 2567

[illegible]

ภาคผนวก ง-3

แผนงานทำความสะอาดถนนทางพิเศษ ประจำปี พ.ศ. 2567

ส่วนระบายน้ำและสิ่งแวดล้อม ฝ่าย สนับสนุนวิศวกรรมทางพิเศษ

[illegible]